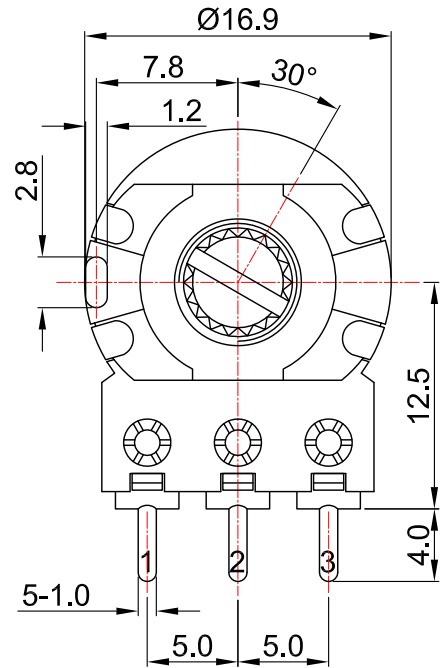
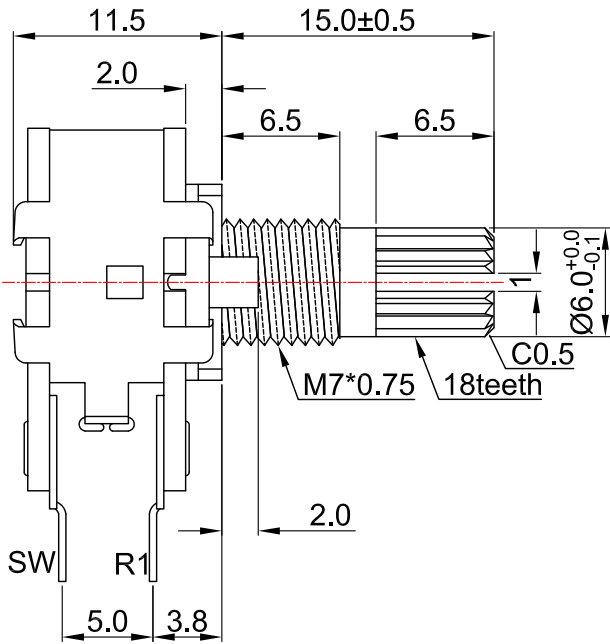
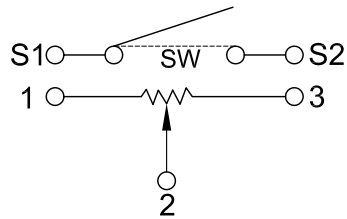


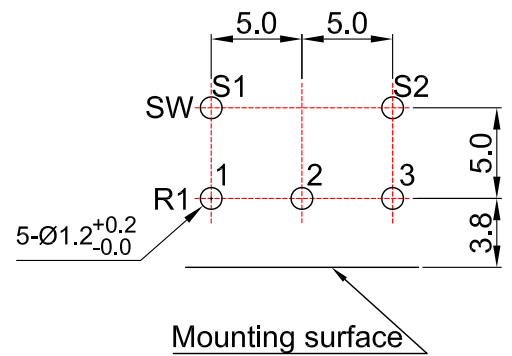
# 外形图 Mechanical Dimensions



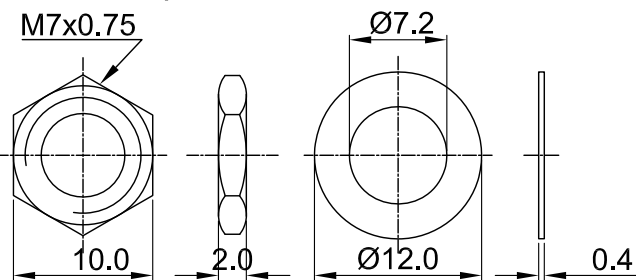
接线图  
Circuit explanation



安装孔位置图  
P.C.B. mounting hole detail



Attached parts: nut & washer



NO	DATE	DESCRIPTION	
DIMENSION	TOLERANCE	SCALE	
$f \leq 10$	$\pm 0.2$	UNIT	mm
$10 < f \leq 30$	$\pm 0.5$	VER.	A0
$30 < f \leq 100$	$\pm 1.0$	DATE	2013/05/31
All Angles	$\pm 5^\circ$		

PRODUCT NAME

Rotary Potentiometer

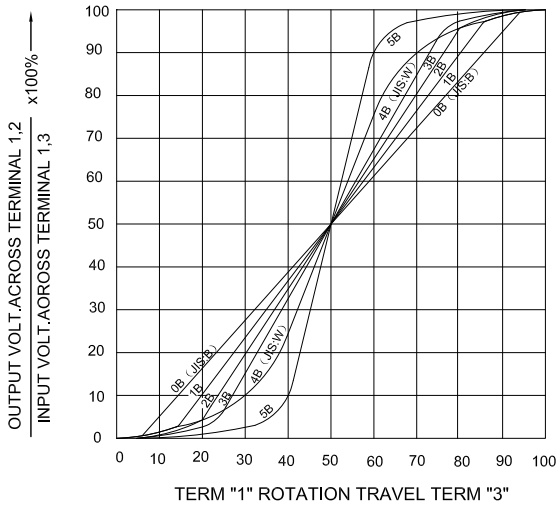
Mike's Electronic Parts LLC

# 16 mm Rotary Potentiometers with SW series Specifications

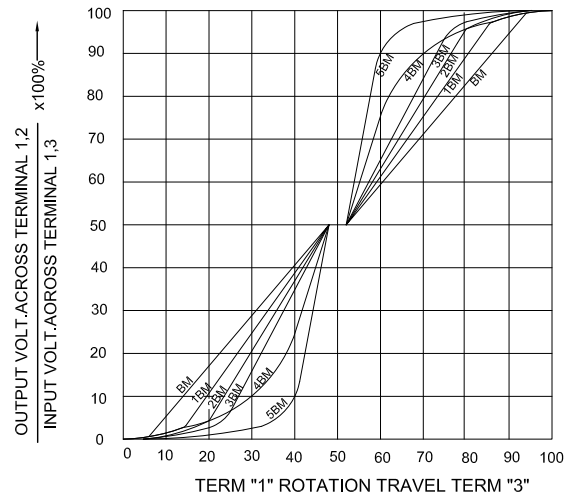
1.電氣性能 (Electrical Characteristics)		
1.1	全阻抗值 (Total Resistance)	1KΩ ~ 2MΩ
1.2	全阻抗值允許偏差 (Total Resistance Tolerance)	±20% ( More than 1 M Ω ±30%)
1.3	電阻隨溫度變化特性 (Resistance of temperature change character)	20°C-75°C:ΔR/R≤±5%, -25°C-20°C:ΔR/R≤±4.5%
1.4	阻值變化特性 (Resistance Taper)	A, B, C, W
1.5	零位阻值 (Residual Resistance)	R≥250KΩ / 0.1 % max. of total Value 250KΩ>R>10KΩ / 20Ω max. 10KΩ≥R / 10Ω max.
1.6	額定功率 (Rated Power)	Linear Taper B: 0.2W Other Taper:0.1W
1.7	最高使用電壓 (Max.Operating Voltage)	150VAC
1.8	動雜音 (Rotational Noise)	Less Than 100mV
1.9	絕緣阻抗 (Insulation Resistance)	More than 100MΩ at DC 500V
1.10	耐電壓 (Withstand Voltage)	For 1 minute at: AC 500V
1.11	开关額定功率(Switch Rated Power)	DC 12V , 1.0A max
2.機械性能 (Mechanical Characteristics)		
2.1	全回轉角度 (Rotation Angle)	300°±5°
2.2	旋轉力矩 (Rotation Torque)	10~100gf.cm
2.3	軸的拉、押強度 (Pull-Push Strength)	Pull 3.5 Kgf.cm / Push 5Kgf.cn
2.4	轉動止檔強度 (Rotational Stop-End Torque)	5 kgf.cm Min
2.5	开关角度(Switch Working Angel)	≤50°±10°
2.6	开关力矩(Switch Working Torque)	50~150gf.cm
2.7	旋轉定位數目 (Number of Detents(click))	-----
2.8	焊錫耐熱性 (Resistance To Soldering Heat)	<u>260±5</u> °C and less than <u>3</u> seconds
3.耐久性能 (Durability)		
3.1	回轉壽命 (Rotation Life)	10,000 Cycles min.
3.2	工作溫度 (Operating temperature)	-10°C~+70°C
4.1	外形尺寸圖/曲線特性圖 (Shape size drawing/curve characteristic drawing)	見附頁 Please refer the drawing

# RESISTANCE TAPER

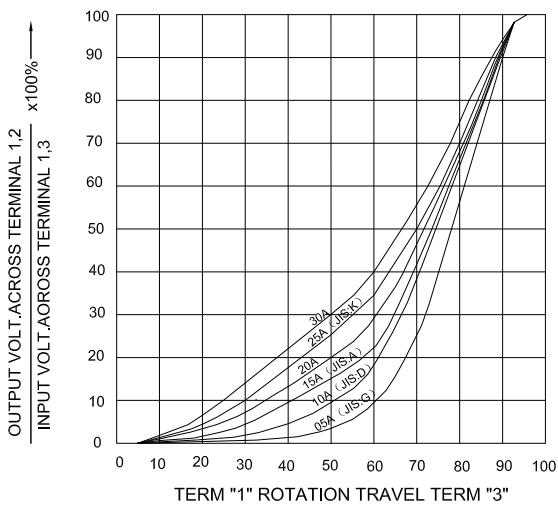
### TAPER B SERIES



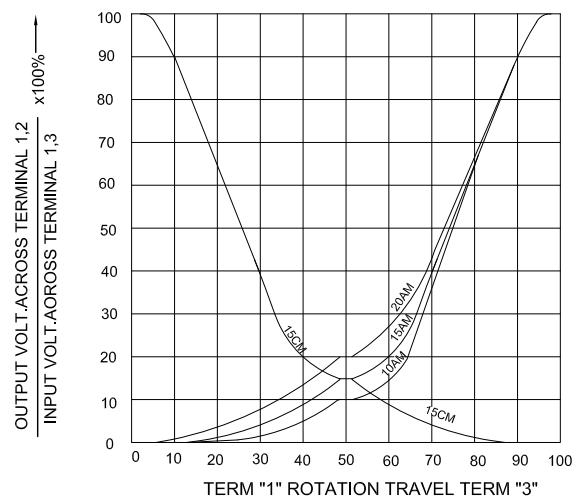
### TAPER B WITH 50% TAP



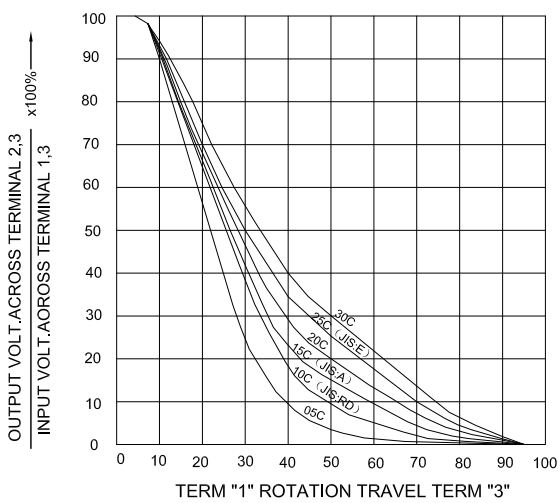
### TAPER A SERIES



### TAPER A & C WITH 50% TAP



### TAPER C SERIES



### TAPER M & N SERIES

